

Asili

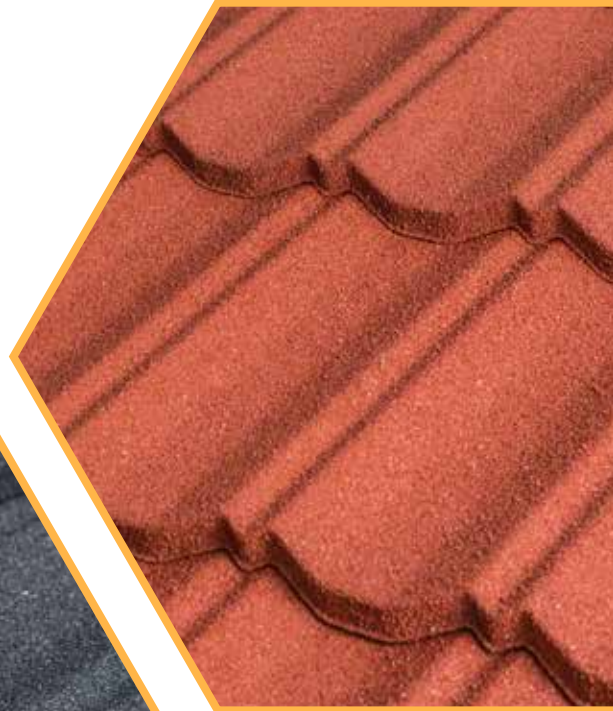
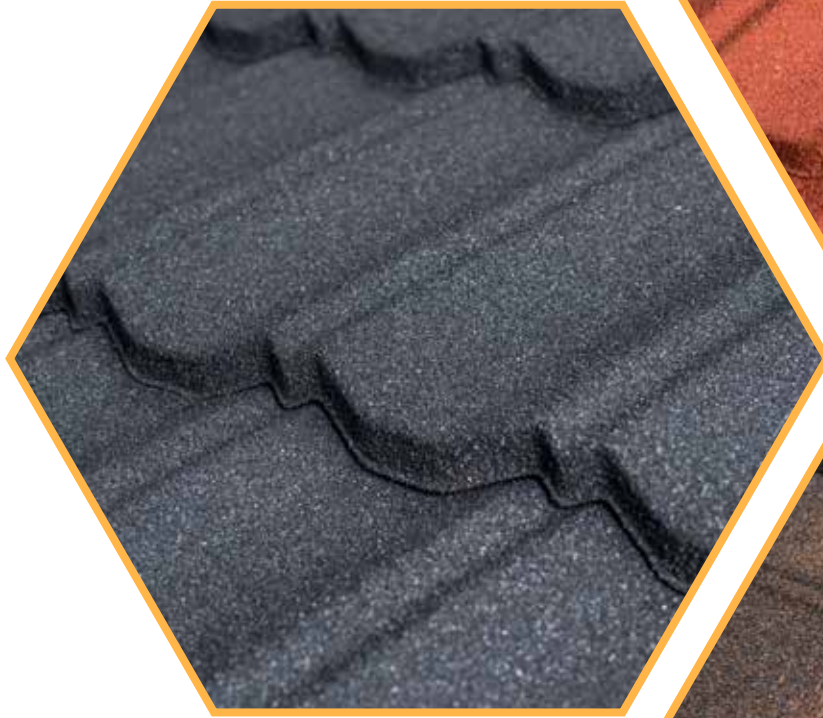
ROOFING TILES



SPACE-STYLE



ISO CERTIFIED 9001:2015



Quality. Affordable. Innovation



SPACE & STYLE
SPECIALIZED BUILDING SOLUTIONS

ASILI CLASSIC

Overall length= 1320 mm/Length of cover=1260mm
Width of cover= 370 mm/ Coverage =2.2 tiles per sqm



Charcoal Black



Charcoal Grey



Garnet Red



Terracota



Teak



Coffee Brown



Sahara



Sage Green



Sapphire



Auckland



Burgundy



Rosso

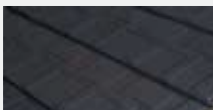


Marrone

NEW IN

ASILI SHINGLE

Overall length= 1320 mm/Length of cover=1260mm
Width of cover= 370 mm/ Coverage =2.2 tiles per sqm



Charcoal Black



Charcoal Grey



Eclipse Black



Garnet Red



Coffee Brown



Bark



Portland



Sahara



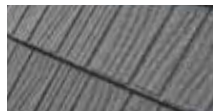
Sage Green



Willow

ASILI THATCH

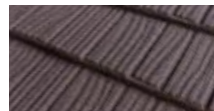
Overall length= 1176 mm/Length of cover=1105mm
Width of cover= 370 mm/ Coverage =2.45 tiles per sqm



Charcoal Grey



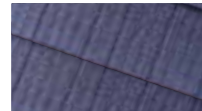
Sahara



Teak



Terracota



Sapphire

PROJECTS GALLERY



Asili Roofing System Accessories



FIXINGS



Nails (Required to validate warranty)



Touch-up kit



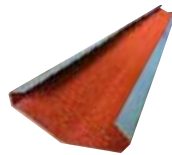
ISO CERTIFIED 9001:2015

TILE ACCESSORIES



Flat Sheet (Colour matched to roof tile)

Overall Length = 2000mm
Length of cover = 1900mm



Coated Valley

Overall Length = 2000mm
Length of cover = 1900mm



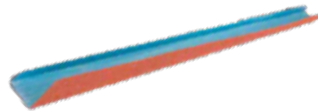
Side Flashing (Colour Matched to roof tile)

Overall Length = 2000mm
Length of cover = 1900mm



Ridge Hip (Colour matched to roof tile)

Overall Length = 2000mm
Length of cover = 1900mm



Box Barge (Colour matched to roof tile)

Overall Length = 2000mm
Length of cover = 1900mm

WHY IT'S UNIQUE

ALU- ZINC MATERIAL

All Asili roof products are manufactured from alu-zinc steel which is shown in tests to last 6-9 times longer than ordinary galvanised steel roofing products. This is achieved by a unique process which protects the steel core with zinc, which is itself protected by an aluminium barrier. As a pioneer in using alu-zinc steel, Asili has unrivalled pedigree in long lasting steel roof tile manufacturing.

NATURAL STONE

Asili roofing tiles are coated with natural stone chips, volcanically formed and taken from quarries with long history of superior performance across the world. These coatings add natural beauty to the roof and a hard layer of protection from the harsh African weather. Being of natural stone, the vibrant colour is protected against the extreme UV of the African sun and will never change.

COATING TECHNOLOGY

Developed using innovative technology, Asili leads the way in design, quality, performance and durability. Our natural stone chips are embedded deep in our own patented basecoat and sealed in a special acrylic overglaze to ensure they stay permanently fixed on the tile. The finished tiles are then slowly baked to ensure durability.



QUALITY & AFFORDABLE COLOR TILE



- Light Weight
- Beautiful finish
- Easy and quick to install
- Strong profile
- Dimensions: 1.2m x 0.37m
- Available in matt and gloss smooth pre-painted finish

Colortile Gloss

Colortile Matt



ASILI BENEFITS

SECURITY



Asili roof tiles are secured to the above tile, the below tile, and the rafter making them most secure against intruders and extremely high winds.

TESTING AND INSPECTION



Asili roof tiles are tested every day to ensure consistent quality and better performance than all metal roof tiles.

ALWAYS AVAILABLE



Asili roof tiles orders are completed in less than a week.

LIGHTWEIGHT



Asili roof tiles save you considerable costs in the roof structure and transport because they are 10 times lighter than clay or concrete tiles!

REDUCED RAIN NOISE



Asili stone coated roofing tiles soften the sound of rain so you get a good nights sleep.

FAST INSTALLATION



Asili roof tiles are 10x faster to install resulting in further cost savings in the construction of your home.

FOR ENQUIRIES:

Super Deals:

0790 906 906
 superdeals@spaceandstyle.co.ke

Juja Factory & Showroom:

0796 555 777
 juja@spaceandstyle.co.ke
 Juja, off Juja Farm Road, off Thika Road

Nairobi Office:

0722 706 837
 info@spaceandstyle.co.ke
 Broadwalk Mall, 3rd floor, Ojjo Road, Off Museum Hill

Eldoret office:

0731 000 865
 eldoret@spaceandstyle.co.ke
 Daima Towers, Ground Floor

Customer Care:

0713 822 522
 customerexperience@spaceandstyle.co.ke

Nakuru Office:

0706 91 91 91
 nakuru@spaceandstyle.co.ke
 Belpa House, Kijabe Street, Ground Floor

Kisumu Office:

0731 777 711
 kisumu@spaceandstyle.co.ke
 Lake Basin Mall, Ground floor

Available Countrywide